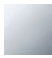

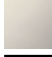





24 510 360

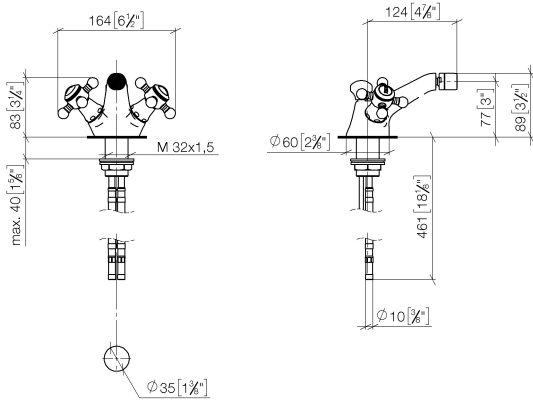


- 125mm projection
- ball-joint pivotable through 15°
- circular, air-enriched flow
- height of mixer 88 mm
- height up to aerator 78 mm
- hole diameter 35 mm
- 2x screw-in M 10 x 1 pressure hose, leak-tested
- max. flow 7 l/min
- WRAS 1802016

|   |                               |               |
|---|-------------------------------|---------------|
|  | Chrome                        | 24 510 360-00 |
|  | Brushed Platinum              | 24 510 360-06 |
|  | Platinum                      | 24 510 360-08 |
|  | Durabrand (23kt Gold)         | 24 510 360-09 |
|  | Brushed Durabrand (23kt Gold) | 24 510 360-28 |
|  | Brushed Dark Platinum         | 24 510 360-99 |

24 510 360

mm [inches]



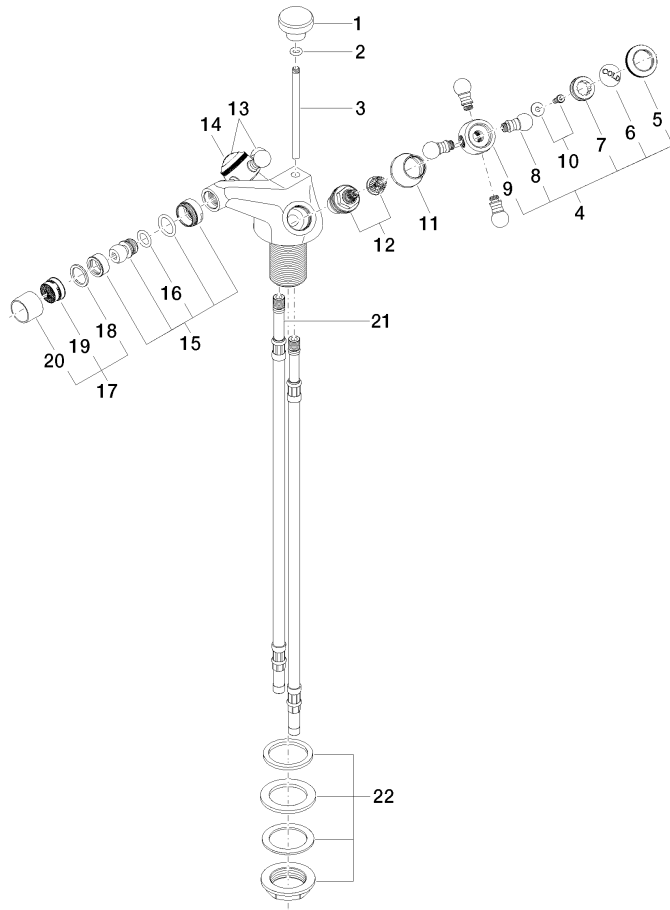
**Flow rate chart**



**Certificates**

WRAS\_2310005.

24 510 360



23 ——— Abtastgerät 04.11.01.001.00-#